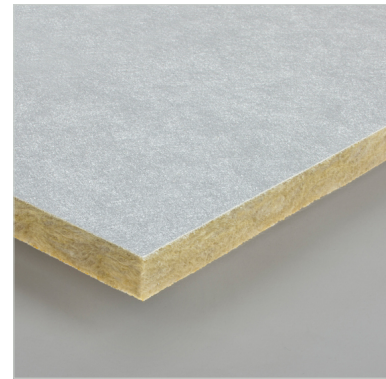
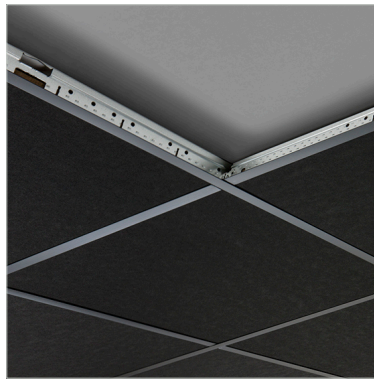


## PARAFON Colortone



Certification Number

0809-CPR-1013 / Eurofins Expert Services Ltd, P.O. Box 1001, FI-02044 VTT, Finland

Short Description

PARAFON Colortone is the generic term for our coloured acoustic panels with surfaces made of coloured glass-fibre fabric of high quality and low gloss. Standard colours are Black, Cement, Metal and Navy, but Colortone can also be supplied in any NCS colours.

Usage Conditions

May be used continuously in 95 % relative humidity at a temperature of 30 °C, occasionally also at 100 % and 40 °C.

### Dimensions

Dimensions		
Thickness	Width x Length	Weight
Edge A:		
15 mm	600 x 600 mm	1,1 kg/m <sup>2</sup>
15 mm	600 x 1200 mm	1,1 kg/m <sup>2</sup>
25 mm	600 x 2400 mm	1,8 kg/m <sup>2</sup>
40 mm	600 x 600 mm	2,8 kg/m <sup>2</sup>
40 mm	600 x 1200 mm	2,8 kg/m <sup>2</sup>

### Packaging

Package Type

Carton

### Fire Properties

Reaction to Fire		
Property	Value	According to
Reaction to Fire, Euroclass	A1	EN 13964:2014 (EN 13501-1)
.	Cement: A2-s1,d0	
.	Metal: A2-s2,d0	

### Other Fire Properties

Property	Value	According to
Combustibility	Base product non-combustible	EN ISO 1182

### Sound Properties

#### Acoustic Absorption Index

Property	Value	According to
Sound Absorption $\alpha_w$ , Construction Depth 200 mm	15 mm: 0,90	EN 13964:2014 (EN ISO 354 / EN ISO 11654)
.	40 mm: 1,00	

#### Property

#### Value

#### According to

Practical Sound Absorption Class	A	EN 13964:2014 (EN ISO 354 / EN ISO 11654)
----------------------------------	---	---

### Mechanical Properties

#### Tensile/Flexural Strength

Property	Value	According to
Flexural Tensile Strength	NPD	EN 13964:2014

#### Other Mechanical Properties

Property	Value	According to
Shatter Properties	NPD	EN 13964:2014

### Emissions

#### Release of Dangerous Substances to the Indoor Environment

Property	Value	According to
Release of Formaldehyde	E1	EN 13964:2014
Release of Asbestos	No content of asbestos	EN 13964:2014

### Durability

Durability of Reaction to Fire Against Heat, Weathering, The fire performance of mineral wool does not deteriorate with time. The Ageing/Degradation Euroclass classification of product is related to the organic content, which cannot increase with time.

### Facings

Facing Material	Pre painted glass fiber surface layer. Backside: thin glass fiber tissue.
Gloss Factor	Black: 0,5, Cement: 1, Metal: 1,5, Navy: 0,5
Light Reflectance	Black: 4 %, Cement: 54 %, Metal: 42 %, Navy: 4 %

### Colours

Free NCS colour also available.



Black, NCS S 9000-N



Navy, NCS S 8010-R70B



Cement, NCS S 2002-B



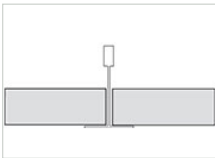
Metal, NCS S 3005-R80B

## Edges

Treatment of Edges

Black, Cement, Metal: Thin  
 spraypainted. Navy, Free NCS:  
 Unpainted.

## Edge Variations



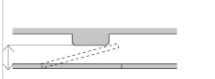
A

## Installation

Installation with Armstrong Prelude suspension system.

## Suspension Height

Installation with exposed suspension system



Tile thickness	Edge A	Edge E
15-18 mm	90 mm	90 mm
25 mm	110 mm	
40 mm	160 mm	170 mm

Minimum construction height using direct hangers is 52 mm.

Minimum suspension  
 height for removal

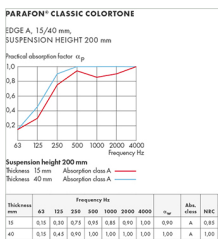
## Maintenance

Using a soft brush, by vacuum cleaning or by wiping with a damp cloth or sponge.

## Disposal and Recycling

May be used as thermal insulation or taken to a dump. No restrictions.

## Sound Absorption Curves



Head Office: PAROC GROUP, P.O. Box 240 (Energiakuja 3), FI-00181 Helsinki Finland, Tel. +358 46 876 8000, [www.paroc.com](http://www.paroc.com)

The information in this brochure describes the conditions and technical properties of the disclosed products, valid at the time of publication of this document and until replaced by the next printed or digital version. The latest version of this brochure is always available on the Paroc website. Our information material presents applications for which the functions and technical properties of our products have been approved. However, the information does not mean a commercial guarantee. We do not assume liability of the use of third party components used in the application or the installation of our products. We cannot warrant the suitability of our products if used in an area or conditions which are not provided in our information material. As a result of constant further development of our products we reserve the right to make alterations to our information material at any time. PAROC is a registered trademark of Paroc Group. This data sheet is valid in following countries: international use (general information).