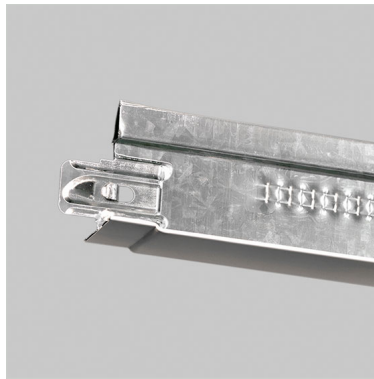


Teetanium LG24



Short Description

The Teetanium LG24 is a fire-punched T-24 galvanized steel suspension system with high torsional strength from the manufacturer Cipriani. The LG 24 cross tees have extra long overlapping "tongues" facilitating the installation and are connected with an audible click system.

Application

Profile system for Suspended ceilings

Usage Conditions

Suspended ceiling substructure components for indoor use

Dimensions

Dimensions	
Width x Length	Height
Main runner Teetanium LG24: 24 x 3700 mm (White)	38 mm
.	
Cross tee Teetanium LG24: 24 x 1200 mm (White)	33 mm
24 x 600 mm (White)	25 mm
.	
Cross tee Teetanium HD24: 24 x 1800 (White)	38 mm
.	
Perimeter trim: 21 x 3000 mm (White)	21 mm
.	
Shadowline: (14+17) x 3000 (White)	(17 + 8.5) mm

Packaging

Package Type

Carton

Fire Properties

Reaction to Fire		
Property	Value	According to
Reaction to Fire, Euroclass	A1	EN 13964:2014

The grid is able to cope with expansion due to heat in a fire and remain flat and stable so that no large gaps and cracks appear between Paroc Group © 2020

grid and tile.

Mechanical Properties

Other Mechanical Properties		
Property	Value	According to
Load Bearing Capacity	See producer's information.	EN 13964:2014
Durability	Corrosion class B	EN 13964:2014

Facings

Facing Material Polyester - melamine

Colours

White (Closest NCS S 0502-G, Gloss factor 19-25)

Installation

According to producer's instructions.

Maintenance

Clean with mild household cleaner and a soft cloth. Before cleaning the grid remove the ceiling tiles to prevent cleaning solution or dirt from getting on the tiles.

Disposal and Recycling

Recyclable