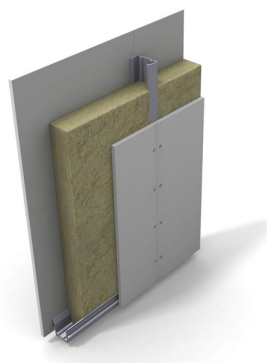


Partition Walls Insulation

Design and Handling Guideline



General

By partition walls, we mean separating structures in the form of inner walls and walls that separate premises. For residential premises, the walls should be insulated to allow for privacy (*and at the same time for better fire safety*). However, in certain situations extra insulation is required in order to exclude heat/cold. The choice of insulation products that is offered is therefore a minimum regarding sound. By sound class, we mean the sound insulation (R'_w) that can be expected between the spaces where the separating structure is used. In order to achieve the stated value, the general structure and connections must be carried out in accordance with the outer layer and/or batten supplier's instructions. The class limits of insulation vary somewhat from country to country. The laboratory recorded measurements of the construction solutions below are at least 3 dB over the stated values.

Cutting

When cutting insulation sheets, a Paroc knife and a straight edge or a cutting table are used. When a lot of cutting is required, cutting tables are excellent tools that allow you to achieve the correct angles. Cutting boards can be quickly adjusted to other sizes and angles.

Filling

The sound insulating function will be affected by how well the space to be insulated has been filled. PAROC UNS products are fitted between beams and studs with an overhang of 5-10 mm so as to obtain a good filling without any cracks or gaps.

The overhang is important for the function of the structure, both in terms of sound insulation and fire safety. Avoid using small pieces, (200 mm), as this will increase the risk of gaps occurring. The thickness of the standard sheets can be adapted to the standard measurements of the timber or steel frames. The width can be adapted to the stud distance in question.

Handling and storing

Insulation is a very important product for buildings and should therefore be handled with great care so as not to jeopardize its functioning. Storing on site until the time it is to be fitted should therefore be carefully planned. The totally sealed plastic packaging protects the product against temporary weather stresses. The insulation should always be covered when stored outside for longer periods. The packages are stowed so that the sheets stand on their edges. If the insulation becomes damp, the packages should be opened and the sheets dried indoors before they are fitted into the structure. Never fit wet insulation. If the insulation becomes wet after fitting, it must not be secured until it has dried.



PAROC GROUP OY AB

Headquarters
Neilikkatie 17
P.O.Box 294
FIN-01301 Vantaa, Finland
Phone +358 204 55 4868
Fax +358 204 55 4738
www.paroc.com